



Sampling for foot and mouth disease diagnosis

The role of veterinarians and veterinary paraprofessionals



Why is sampling important?

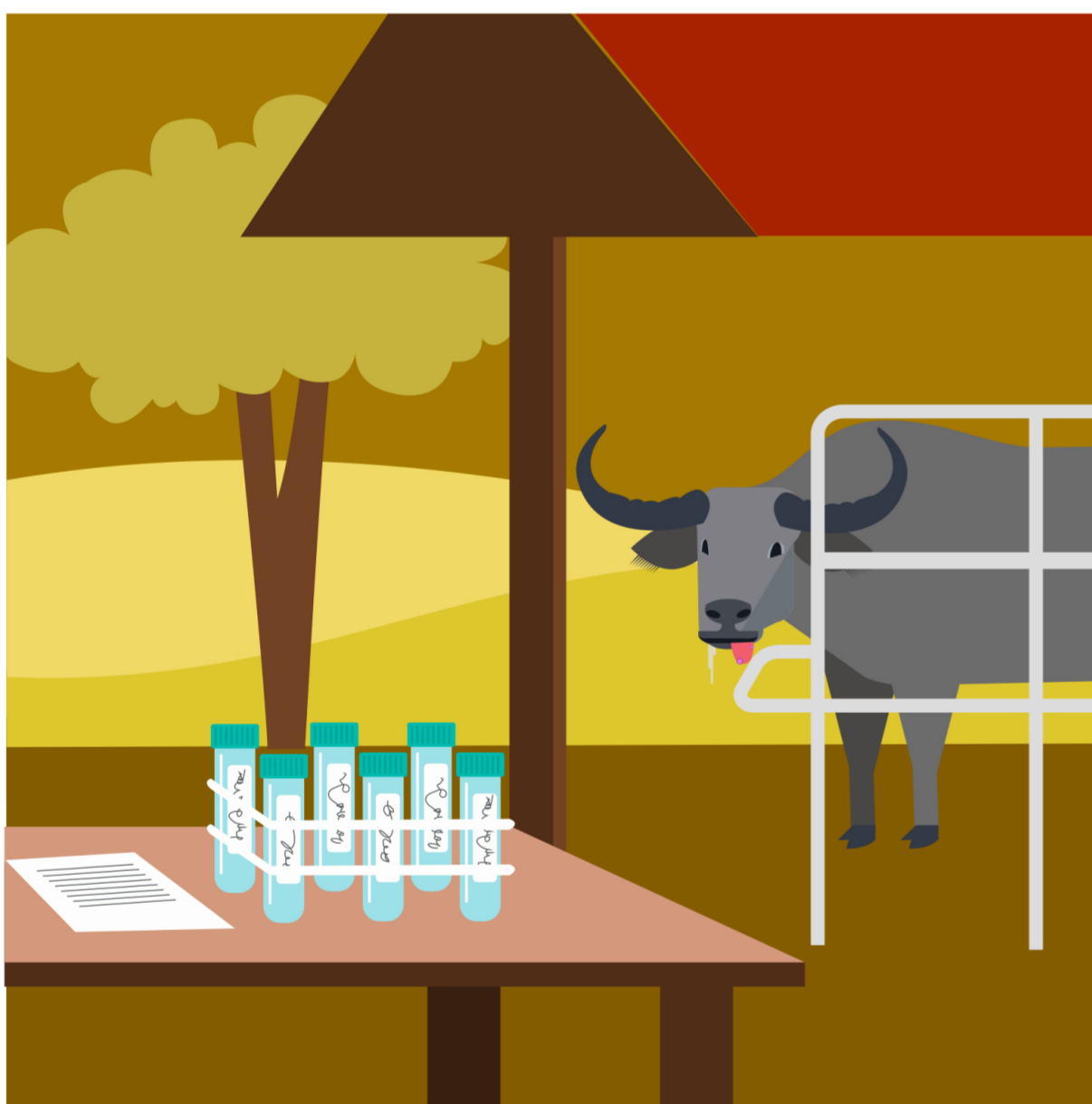
- Collecting appropriate samples (epithelial tissue, blood, etc.) is critical for foot and mouth disease (FMD) diagnosis of suspected cases.
- Laboratory diagnosis helps in the detection of either the FMD virus itself or antibodies to the FMD virus.
- Timely detection plays a crucial role in managing and possibly stopping FMD outbreaks.



Stages for FMD diagnosis sampling

Step 1: Collection

- Collect samples from animals showing clinical signs.
- Vesicular fluid and epithelium are the preferred samples since they are rich sources of the virus.
- Collect duplicated samples if you need to submit them to different laboratories for diagnosis.



Stages for FMD diagnosis sampling

Step 2: Labelling and handling

- Each sample should be suitably and legibly labeled on the container with a waterproof marker.
- The sample should be accompanied by animal description and details (age, sex, breed, vaccination status and ID) and their owner details (name and address).



Stages for FMD diagnosis sampling

Step 3: Storage and transport

- Maintenance of the cold chain is important for sample quality.
- Ensure the samples are kept at 4° Celsius for short shipments (1 to 2 days) using ice packs.

The World Organisation for Animal Health (WOAH) has been at the forefront of controlling animal diseases for over a 100 years.

We work with our members to protect the health of animals, humans and the planet.

For more information:

Sub-Regional Representation for South-Africa
Ministry of Agriculture,
Plot 4701,
Mmaraka Road
P.O. Box 25662
Gaborone
B O T S W A N A

+267 391 44 24

Email: srr.southern-africa@woah.org
<https://rr-africa.woah.org/en/>
Facebook: World Organisation for Animal Health
Instagram: @worldanimalhealth
LinkedIn: World Organisation for Animal Health
YouTube: worldanimalhealth

Source Design: SEACFMD